

Mechanically Vented Round Solar Skylights

Solar Light Whiz now also offers four mechanically vented round solar skylights in the following sizes: 150mm, 200mm, 250mm & 300mm.

- 150mm has a 120mm 8w 750lm solar light, suitable for toilets
- 200mm has a 150mm 12w 1100lm solar light suitable for bathrooms, en-suites etc.
- 250mm has a 170mm 15w 1400lm solar light suitable for large bathrooms, laundries etc.
- 300mm has a 225mm 18w 1700lm solar light suitable for a kitchen etc.

SLW mechanically vented skylights may be connected to a Solar Whiz 150mm inline solar fan or a 240v 150mm inline fan, to exhaust into the ceiling, above the roof or through an eave vent via 150mm flexi duct. Matching the mechanically vented skylight with a night operation kit, you have a 3 in 1 solution for ventilation and light, day or night.



Accessories and Options

The Solar Light Whiz USPS offers you great flexibility in how you can install and use the skylight

Options and accessories include: Nightoperation, single and multiple channel dimmers, splitters, extension leads and a larger range of PV panels from 25 to 150 Watt allowing you to match multiple LED panels to one suitable PV panel. If your ceiling isn't suitable for recessed installation ceiling spacers are available.



Product Range

Rectangular

- 295mm x 595mm
- 295mm x 1195mm
- 595mm x 1195mm



Round

- 120mm Ø
- 150mm Ø
- 170mm Ø
- 225mm Ø
- 300mm Ø



Square

- 295mm
- 595mm



Clean, uniform designs across all sizes for each type

Uninterrupted Solar Powered Skylights during the day, dimmable LED panels at night!

Solar Light Whiz USPS use dimmable LED panels, which enables the light to be used as a conventional LED panel at night by incorporating our day/night pack. By adding a dimmer from our accessory range – you can also dim the solar skylights if you wish – or turn them off entirely – making SLW perfect for bedrooms and media-rooms or if you go away for an extended period of time.

A dimmer also comes in very handy in conjunction with our day/night pack – as the light from the LED panels may appear very bright at night.

Solar Skylights – Applications

Solar skylights are equally useful in domestic and commercial settings. Solar skylights are ideal for dark and hard to reach areas in single and especially multi-storey buildings.

Domestic solar skylight:

- Bedrooms and media rooms
- Rooms with limited natural light
- Entrances
- Hallways
- Walk in robes
- Internal toilets and bathrooms
- Pantries
- Laundries
- Garages

Business and commercial skylight - LED:

- Offices
- Schools and child care institutions
- Shops
- Clinics and doctors surgeries
- Change rooms
- Factories
- Gymnasiums
- Sheds and stables
- Storage facilities

Global Eco & Environmental Solutions

Visit our showroom at:

1135 Toorak Road, Camberwell, VIC 3124

Call us: 1300 655 118



www.solarskylights.com.au

Delivery available Australia wide

Contact your local dealer:

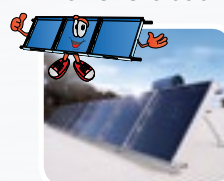
Other great solutions from GES

Solar Cooling & Roof Ventilation



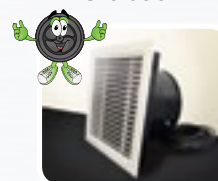
www.solarwhiz.com.au

Solar Heating & Home Ventilation



www.heatwithsolar.com.au

Solar Subfloor Ventilation



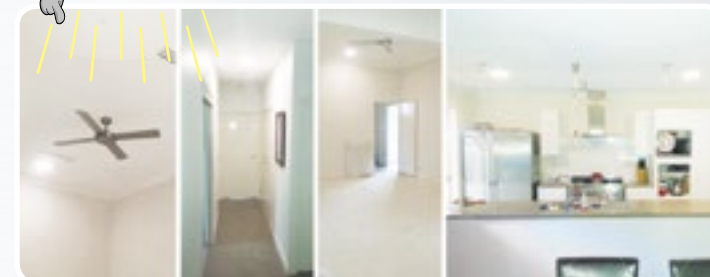
www.solarventilation.com.au



Solar Skylights & Lighting

Solar Skylights - The Uninterrupted Solar Powered Skylight Alternative

Why install a conventional skylight when you can install an uninterrupted solar powered skylight system?



- Brightens your home or workspace!
- Looks and behaves like a traditional Skylight!
- Our USPS Solar Skylights can be used throughout the home or in commercial settings – day & night!

- No mains electricity consumption
- No carbon emissions
- Simple and easy installation
- No heat or noise entering the building

www.solarskylights.com.au

Solar Skylights - The Uninterrupted Solar Powered Skylight Alternative



Bringing natural light into your home or work environment!

Solar Light Whiz USPS LED panels are designed to mimic the light provided by a traditional skylight - while offering superior flexibility and ease of installation - allowing the SLW to brighten the darkest corners of your home which cannot be reached by a traditional skylight! Solar Light Whiz is perfect for bringing the feel of natural light to areas in the home such as living rooms, kitchens, walk in robes, bathrooms or commercial applications such as: offices, schools and other commercial environments, but without the disadvantages of a traditional skylight.

Traditional skylights are normally difficult, time consuming and expensive to install due to the light shafts, which limit the options for specific locations and allow large amounts of heat to enter the building in summer - and escape in winter.

Benefits of uninterrupted solar powered skylight systems - Solar Light Whiz Vs Traditional Skylights

• Can be installed under roof trusses, roof hips and valleys, etc.	• Suitable positions for installation are limited
• Roof penetration the size of a finger!	• Large roof penetration!
• Easy and inexpensive to install single lights and very economical for multiple lights	• Difficult and costly installation, especially for multiple lights
• Suitable for both single and multi-storey buildings	• Requires direct access to roof for skylight shaft
• Safe for fabrics and exposed surfaces	• UV light will damage fabrics and exposed surfaces
• No heat gain or loss	• Significant heat gain or loss
• Inexpensive on/off switch & dimmable	• Expensive to switch off or dim

But wait – Solar Light Whiz USPS offers more benefits!

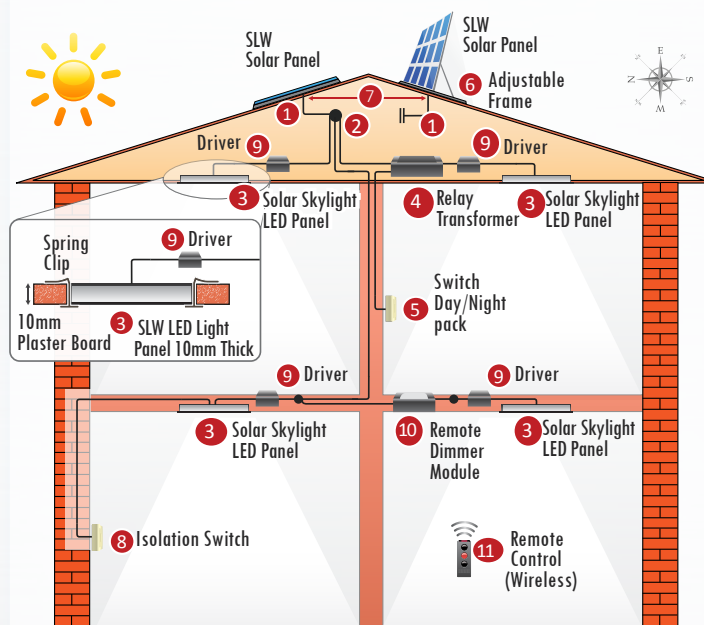
Constant light day or night	Varying light intensity may not always be what you want or need. No problem with our accessory range.
Higher light output	Compare the lumen flux output of SLW with our competitors and see how much more light you get from the same size LED.
Natural day light colour	The correlated colour temperature (CCT is between 4000 and 4500K), which is comparable to natural light provided by the sun.
Single solar panel for multiple LED's	You can power multiple SLW LED panels from a single Solar Panel using our off-the-shelf wiring accessories.
Adjustable solar panels	The angle of the SLW solar panels can be adjusted (0-80 degrees) to maximise solar exposure - even enabling installation on a south facing roof - if necessary.

How does Solar Light Whiz work?



Day: During the day our solar skylights will reflect the intensity of the natural sunlight outside. As the sun gets higher in the sky, or clouds reduce the natural sunlight available, the smart LED will emit light accordingly. Solar Light Whiz smart skylights give you a similar experience to traditional skylights but with a number of significant benefits.

Night: If you wish to use the smart skylight at night, we have a night operation kit, which can be connected to mains power with a GPO in your roof space, operated by a wall switch.



1. Power from SLW Solar panel to a USPS module and from there to LED panels
2. Wiring harness (3 way splitter)
3. SLW Skylight LED light panel
4. 240 Volt transformer with relay system for night time use
5. Switch for night time use connected to 240 Volts
6. Adjustable frame for SLW solar panel
7. Weather proof connection through roof from SLW solar panel to ceiling space
8. Isolation switch. Turns the LED panel off during the day
9. Each SLW LED light panel has a "driver" which controls the power to each unit
10. Remote dimmer module
11. Remote control (wireless)

Tailor your own installation

The wide range of solar and LED panels allows you to tailor your own installation with customised wiring accessories that cannot be pulled apart by mistake. You can also incorporate dimmers, night operation and on/off switches.

Part No.	Power	PV Panel Watt	Size	CCT	Lumen Flux
SLW1-120N-KIT	8W	25	Diameter ø: 120mm Cut-out ø: 105mm	4000~4500K	750
SLW1-150N-KIT	12W	25	Diameter ø: 150mm Cut-out ø: 130mm	4000~4500K	1100
SLW1-170N-KIT	15W	25	Diameter ø: 170mm Cut-out ø: 150mm	4000~4500K	1400
SLW1-225N-KIT	18W	25	Diameter ø: 225mm Cut-out ø: 205mm	4000~4500K	1700
SLW1-300N-KIT	24W	35	Diameter ø: 300mm Cut-out ø: 280mm	4000~4500K	2300
SLW2-295-295N-KIT	24W	35	Frame size: 295 x 295 Hole size: 285 x 285	4000~4500K	2300
SLW2-295-595N-KIT	36W	50	Frame size: 295 x 595 Hole size: 285 x 585	4000~4500K	3400
SLW2-595-595N-KIT	40W	60	Frame size: 595 x 595 Hole size: 585 x 585	4000~4500K	3800
SLW2-295-1195N-KIT	40W	60	Frame size: 295 x 1195 Hole size: 285 x 1185	4000~4500K	3800
SLW2-595-1195N-KIT	72W	100	Frame size: 595 x 1195 Hole size: 585 x 1185	4000~4500K	6800

Warranty

Solar Light Whiz products are designed and manufactured for durability in Australian conditions and are backed up by a substantial warranty. We have a 10 year warranty on PV panels and a 2 year warranty on all other components. Extended warranty is also available.

Disclaimer: Global Eco & Environmental Solutions does not accept any responsibility for events that result from the use of this product or the information provided in this brochure.